

Food Organics and Garden Organics (FOGO), Recycling and Waste Guide



For all information regarding FOGO, recycling and waste services visit:
www.boroondara.vic.gov.au/waste-environment



Download the **Recycle Coach** app
This app will help you recycle right and
get the most out of our services.



Your three bins

2

FOGO
Food Organics and
Garden Organics
Weekly

Food
waste

Garden
waste



RECYCLING
Weekly



WASTE
Fortnightly



How to best manage waste

The waste hierarchy outlines the best way to manage your waste. By avoiding, reducing, reusing and recycling our waste, together we can minimise our environmental impact, keep valuable materials out of landfill, recover materials to support the economy and protect our natural resources. Challenge your household to rethink and avoid waste whenever possible.



For more information visit
www.boroondara.vic.gov.au/avoiding-waste.

Help us keep waste out of landfill

Based on bin audits, did you know that almost two-thirds of the average Boroondara waste bin has a better place to go? Ensure you sort your waste correctly to reduce the amount going to landfill and increase space in your waste bin.

What is in the average Boroondara waste (landfill) bin

8% other

52% food and garden waste
Page 4

9% recycling Page 6

31% waste

Actual landfill waste is only up to 1/3 of most waste bins



Recycle correctly and use the FOGO service to reduce your waste bin contents by more than half.

🔍 Use our A to Z guide to help you sort your waste correctly at **www.boroondara.vic.gov.au/A-to-Z**.

Avoiding food waste

Australian households throw away an estimated five million tonnes of food every year, the equivalent of one in five grocery bags. Per household that is around \$3,800* – about the same cost as a seven day holiday for four people in Fiji.

**Source: OzHarvest Food Waste Facts
December 2019*

For more helpful food waste avoidance tips visit www.boroondara.vic.gov.au/avoid-food-waste.



Food Organics and Garden Organics (FOGO)

4

Weekly collection

Your weekly FOGO bin has a lime green lid.

FOGO allows food and garden waste to be collected and recycled together.

Your FOGO bin contents are hot composted to make soil conditioner products for use in horticulture and agriculture including growing more food.



Light prunings
and dead flowers



Bakery items,
pasta and rice



Twigs and small
branches (up to 75mm
thick, cut to fit in bin)



Seafood, meat
and raw bones



Leftover foods



Grass, weeds and leaves



Fruit, vegetables,
tea leaves and
coffee grounds



Paper towels, tissues
and newspapers



Dairy and egg shells



**These items
are NOT
accepted
in FOGO.**



Plastic bags or any
other type of bags



Food packaging
and polystyrene



All nappies
inc. compostable



Tea bags



Cooked bones



Stickers on fruit
or vegetables



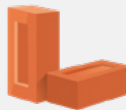
Animal poo/litter



Glass



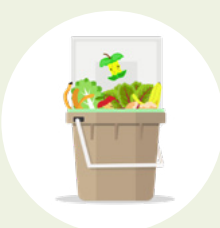
Treated wood inc.
offcuts and fencing



Bricks, rocks
or concrete



Plastic or
terracotta pots



Line your caddy with a Council
approved compostable liner
(100% corn starch),
newspaper or choose not to
use a liner at all.

Use your kitchen
caddy to collect food
scraps, leftovers,
plate scrapings and
spoiled food.

Once your caddy is full,
put the liner into your
FOGO bin for a weekly
kerbside collection.

For more information and a detailed list of accepted items visit
www.boroondara.vic.gov.au/fogo.

Recycling

6

Weekly collection

Your weekly recycling bin has a yellow lid and blue body.

Items must be empty, food-free and loose. Please **do not** bag your recycling.



Cardboard and boxes
(unwaxed and squashed)



Aluminium cans, foil
(rolled into a ball)
and trays



Milk and juice cartons



Glass bottles and jars
(unbroken if possible
and lids off)



Plastic bottles and hard
plastic trays/containers
(lids on)



Paper (inc. newspapers,
magazines and mail)



Steel cans



Empty aerosol cans

These items are NOT accepted in recycling.

They cause contamination and may result in the contents being sent to landfill.



Flexible/soft plastics and bagged material

Place all items in your bin loose, not in bags. See below for correct disposal.



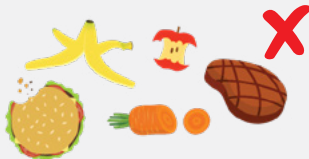
Polystyrene

Take large solid white polystyrene to the Boroondara Recycling and Waste Centre.



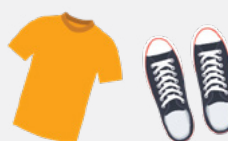
Garden waste

Place this in your FOGO bin. See page 4 for more information.



Food waste

Place this in your FOGO bin. See page 4 for more information.



Clothing and footwear

Donate items to charity, use them as rags or put them in your waste bin.

No flexible/soft plastics

Flexible/soft plastics **are not** accepted in your recycling bin. You can recycle these via the REDcycle Program at Coles and Woolworths supermarkets.

Examples of flexible/soft plastics are plastic bags, plastic wrappings, bubble wrap, and foil-lined plastics including chip packets.

Test: If you can scrunch it into a ball in your hand, then it is a flexible/soft plastic.



Collect flexible/soft plastics and put in a plastic bag



Tie bag when full



Take to REDcycle bin at Coles or Woolworths

For more information visit www.boroondara.vic.gov.au/recycling-bin.

Waste (landfill)

8

Fortnightly collection

Your waste bin has a dark green lid. This bin has a fortnightly collection – check your waste bin calendar for collection dates. Landfill waste is anything that cannot be reused, composted or placed in your FOGO bin or recycling bin.



Soiled food packaging
inc. cling film and
meat wrappings



Disposable
coffee cups and
waxed cardboard



Polystyrene
(food/drink containers
and beads)



Animal waste
and litter (wrapped)



Broken drinking
glasses and all cookware



Used nappies
(inc. compostable),
incontinence and
sanitary products



Damaged clothes
and old rags



Broken plant pots



Cooked bones

**These items are
NOT accepted in
your waste bin.**



Light bulbs or tubes
See page 13



Electronic waste (e-waste)
See page 13



Paint
See page 13



**Liquids, hazardous
or chemical waste***



Syringes
(use sharps box)



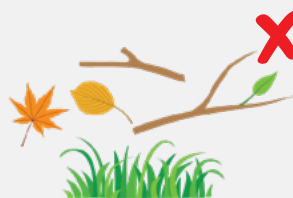
Batteries
See page 13



Recyclables
See page 6



Food waste
(cooked bones are accepted)
See page 4



Garden waste
See page 4

**Dispose via the annual Detox Your Home mobile special collection
For more information visit www.boroondara.vic.gov.au/recycling-waste-centre.*

Did you know?

You can reduce your waste bin size and save money.

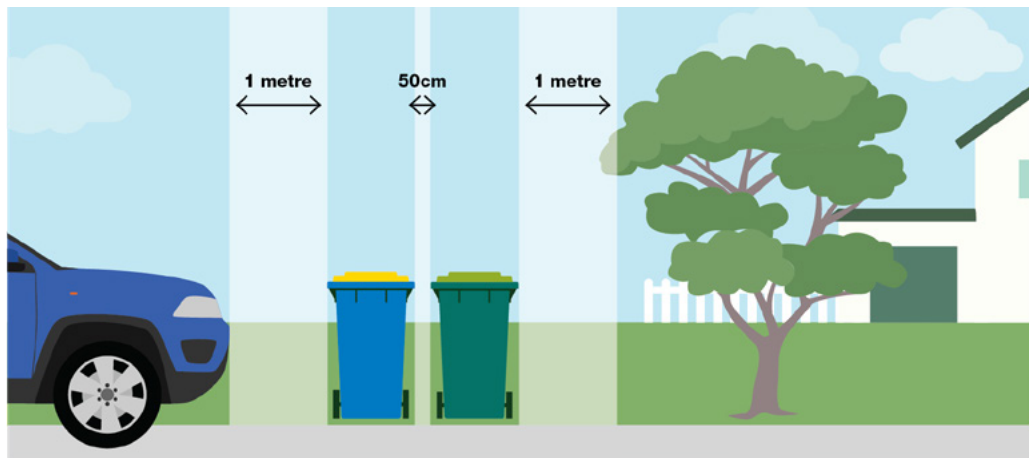
Learn more at www.boroondara.vic.gov.au/waste-bin or call **9278 4444**.

 For more information visit www.boroondara.vic.gov.au/waste-bin.

Correct bin placement

10

For more information visit www.boroondara.vic.gov.au/bins.



DO NOT

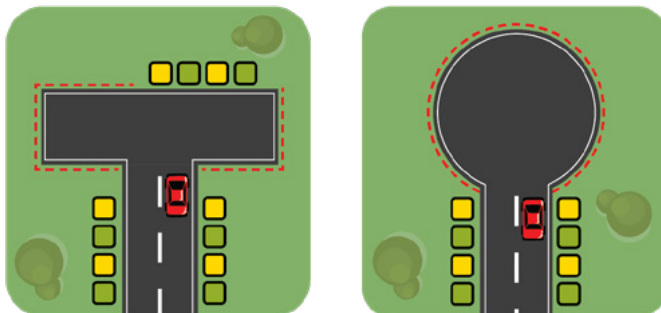
place bins next to street trees, street signs, or on driveways.



If you live on a court or a bowl, place bins on the straight edge and not on a corner.

--- No bins

Correct bin placement



Composting and worm farming

Composting and worm farming is an easy and sustainable way to significantly reduce organic waste in landfill, and the associated harmful greenhouse gases. Plus, you can use the material produced in your own garden.

Our FOGO collection service complements these options by accepting food items which are hard to process at home, including raw bones, chilli, and citrus (see page 4).

Did you know?

- 🗑 Council provides subsidies for composters and worm farms.
For more information visit www.boroondara.vic.gov.au/order-compost-bin.

 Compost bin	 Worm farm	 Green cone composter
Fruit and vegetable scraps	Fruit and vegetable scraps	All food waste (cooked, uncooked and processed) including fruit and vegetables, meat, seafood, bones and dairy.
Tea leaves and coffee grounds	Tea leaves and coffee grounds	
Old flowers, leaves and cut grass	Crushed egg shells	
Shredded paper and cardboard	Small amounts of moist paper and cardboard	Animal poo
Tip: Layer wet and dry materials and turn or mix over time to aerate well.	Tip: Add wet and dry material. Add layers approximately 3cm thick – do not overload. Keep moist. No citrus, dairy, chilli, onion or garlic.	Tip: Bury the bottom part of the cone in a sunny location. The more sun exposure, the faster it will compost your waste.

Residents with kerbside collections by Council are entitled to two complimentary bundled green waste collections each year during **April** and **October**. **Bookings are required.**

Book a bundled green waste collection

📍 Visit www.boroondara.vic.gov.au/book-bundled-green-waste or call **9278 4444**.

Collection requirements:

- up to two cubic metres can be collected
- tie firmly with natural twine/string (not plastic)
- prunings and tree branches (less than 75mm in diameter and 1.5m in length)
- single tree limbs (75mm to 200mm in diameter)
- tree roots
- all items must be able to be lifted by one person
- collection only from the nature strip, at the kerb of the street frontage, or side of a corner property.



Christmas tree collections

From December to late January, residents with kerbside collections by Council can book to have their real Christmas tree collected from their naturestrip.

Bookings are essential at

www.boroondara.vic.gov.au/christmas-tree-collection.



Next year why not buy a tree in a pot that can be reused every year?
Save money and reduce your waste.



Detox your home

Boroondara Recycling and Waste Centre is a permanent **Detox Your Home drop-off site**. In partnership with Sustainability Victoria, we provide a safe and environmentally-responsible disposal option for everyday toxic products including:

- ✓ **Paint**
(maximum 100L per drop-off)
- ✓ **Gas bottles**
(9kg maximum – residents only)
- ✓ **White polystyrene**
(solid only – no beads, residents only)
- ✓ **Car and household batteries**
- ✓ **Light globes and tubes**
- ✗ **No chemicals**

🖱 For more information about where you can dispose of e-waste visit www.boroondara.vic.gov.au/recycling-waste-centre.

Electronic waste (e-waste)

E-waste is anything with a plug, battery or cord. It is illegal to place e-waste in kerbside bins. All e-waste must be separated and recycled at the Boroondara Recycling and Waste Centre, small local collection points across Boroondara, or via a booked hard waste collection.

Some examples of e-waste include:



Phones, mobiles and chargers



TVs, computer parts and monitors



Fans and panel heaters



All batteries



Small to medium appliances
inc. coffee machines,
vacuums and irons



Large e-waste and
whitegoods inc. fridges and
washing machines (fees apply)

🖱 For more information about where you can dispose of e-waste visit www.boroondara.vic.gov.au/e-waste.

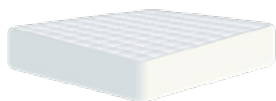
Booked hard waste collection

14

Residents with kerbside collections by Council are entitled to two free hard waste collections each financial year. You can present up to two cubic metres per collection. Flats of seven or more must book through their Body Corporate.

You must book first before putting your hard waste on the street. Upon booking, we will send you an information pack and sticker with instructions. Please read the instructions carefully.

Items accepted in the hard waste collection:



Mattresses and bed bases

Two items per collection



Electronic waste and whitegoods

Tape fridge door shut



Larger steel or metal items



General hard waste inc. furniture, carpet
max. 3 rolls of carpet



Wood
(no fencing or pallets)
12 pieces max, 1.5m long



Mirror or glass
Wrapped in cardboard and labelled as 'glass'

Items NOT accepted in the hard waste collection:

- | | |
|---|--|
|  Gas bottles |  Paint* |
|  Household recyclables* |  Tyres and car parts* |
|  Green waste* |  Batteries* |
|  Building/renovation materials* |  Chemical waste** |
|  Asbestos (contact WorkSafe to find a licensed asbestos removalist) | |

*Take to the Boroondara Recycling and Waste Centre (see page 16)

**Dispose via the annual Detox Your Home mobile special collection

(For more information visit www.boroondara.vic.gov.au/recycling-waste-centre)



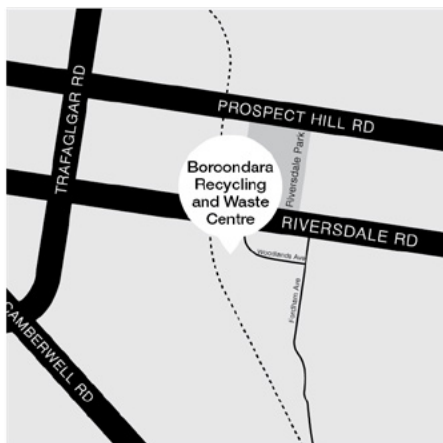
To book a hard waste collection visit www.boroondara.vic.gov.au/book-hard-waste or call **9278 4444**.

Your A to Z guide

- | | |
|--|--|
| 1 Weekly recycling collection | 7 Fortnightly waste (landfill) collection |
| 2 Weekly FOGO collection | 8 Booked bundled green waste collection |
| 3 Compost | 9 Drop off at Boroondara Recycling and Waste Centre |
| 4 REDcycle collection at supermarkets | 10 Detox Your Home (annual mobile collection) |
| 5 Booked hard waste collection | 11 External (non-council) collection |
| 6 Op-shop/Charity shop | 12 E-waste collection points (small e-waste items only) |

1 9	Aerosol cans (empty, do NOT squash)	9	Fencing and timber
1 9	Aluminium cans and foil (clean, roll into a ball)	2 3	Food waste
7	Animal poo (wrapped)	5 6 9 11	Furniture
11	Asbestos (contact Worksafe)	2 3 8 9	Garden waste
9 12	Batteries (alkaline, NiMH, NiCad)	9	Gas bottles (residents only)
1 9	Bottle tops (metal screw tops or plastic)	1 9	Jars (glass/plastic) with lids
1 9	Bottles (glass and plastic)	1 9	Juice cartons (tetrapaks – foil only)
8 9	Branches (large, up to 200mm diameter)	7	Kitty litter
2 8 9	Branches (small, up to 75mm diameter)	9 10	Light bulbs/tubes
9	Bricks, rubble/building materials or doors	5 9	Mattresses
1 9	Cans (steel/aluminium)	9 11 12	Mobile phones
1 9	Cardboard (unwaxed)	9	Motor oil (maximum 20L in 5L cans)
7	Cardboard (waxed, inc. fruit boxes)	7	Nappies (disposable) (wrapped)
7	Ceramics and crockery (broken)	9	Paint
10	Chemicals (household)	1 3 9	Paper (newspapers, magazines etc)
4	Chip/chocolate packets (foil lined)	1 2 3 9	Pizza boxes
7	Cigarette butts	4 7	Plastic bags/food wrappings (flexible/soft plastics)
4	Cling wrap (GLAD/Coles Home Brand/Woolworths Essentials ONLY)	1 9	Plastic containers (hard)
7	Cling wrap (all other brands)	7 9	Polystyrene/Styrofoam (solid white)
6 7 9 11	Clothing/shoes	7	Smoke alarms
7	Coffee cups (plastic lined) and lids	1 9	Steel (tins/cans)
11	Coffee pods (visit Terracycle website)	9	Tyres
9	Cooking oil (maximum 20L in 5L cans)	5 6 9	Whitegoods
5 9 12	Electrical appliances (e-waste)	9	X-rays

🖱️ View the full list online at www.boroondara.vic.gov.au/A-to-Z.



Boroondara Recycling and Waste Centre

648 Riversdale Road, Camberwell

This site has extensive free drop-off facilities for items that cannot be disposed of in your household bins. General recyclables, small to medium e-waste, paint, oil and polystyrene can be dropped off for free. Charges apply for household waste, large e-waste and whitegoods, scrap metal and green waste.

Opening hours

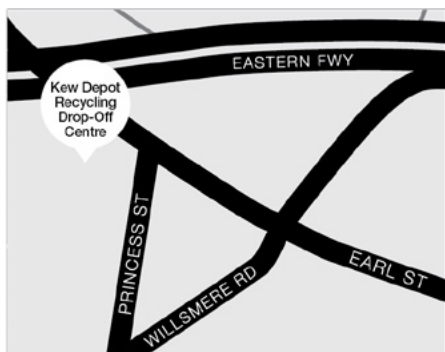
Mon to Fri: 1pm to 4pm | **Saturday:** 8am to 4pm

Sunday: 8am to 4pm

(for green waste and recycling drop-off only)

Closed: Good Friday, Christmas Day and New Year's Day

📍 www.boroondara.vic.gov.au/recycling-waste-centre



Kew Depot Recycling Drop-Off Centre

31-35 Hutchinson Drive, Kew

This site has free household recycling drop-off only (as per the Council's kerbside weekly collection service). See page 6 for accepted materials. No general waste accepted.

Opening hours

Mon to Fri: 7.30am to 4.30pm

Sat and Sun: 10am to 2pm

Closed: Public holidays

📍 www.boroondara.vic.gov.au/kew-depot

Customer Service Centres

Camberwell Office
8 Inglesby Road, Camberwell VIC

Hawthorn Arts Centre
360 Burwood Road, Hawthorn

Kew Library
Corner Cotham Road and Civic Drive, Kew

Telephone and after hours emergency line
9278 4444

Email
boroondara@boroondara.vic.gov.au

Website
www.boroondara.vic.gov.au

Free interpreting services
9278 4002

Speech or hearing impaired
National Relay Service TTY 13 36 77
Speak and Listen 1300 555 727